

**60th Annual
Lightning Miami Midwinter Regatta
March 28, 29, 30, 2018**



Coral Reef Yacht Club
Coconut Grove, Florida, USA

SAILING INSTRUCTIONS

1 RULES

1.1 The regatta will be governed by the rules as defined in *The Racing Rules of Sailing*.

1.2 *ILCA Constitution, By Laws, and Document Governing* all Lightning Class Sanctioned Regattas *apply*.

1.3 RRS/US prescription Appendix V Section V1 (Penalty at the time of the incident), Section V2 (Penalty taken after a race) will apply.

1.4 RRS 41 *Outside Help* is modified with the addition of “(e) an ILCA and OA approved and designated coach boat is allowed on the course and to primarily coach boats that are identified by a backstay streamer. No boat breaks a rule if they receive unsolicited input from the ILCA coach. The ILCA coach is designated by this rule to coach all boats and individual team coaches are not authorized by this change. This change also modifies Document Governing Article VIII – Racing Conditions, Section Support Boats.”

1.5 RRS 62.1 *Redress* is modified with the addition of “(e) A competitor may not base a request for redress on a claim that an action by an official boat was improper. The protest committee may decide to consider giving redress in such circumstances but only if it believes that an official boat, including a coach boat, may have seriously interfered with a competing boat.”

2 NOTICES TO COMPETITORS

Notices to competitors will be posted on the Official Notice Board located in the breezeway adjacent to the men’s locker room at Coral Reef Yacht Club.

3 CHANGES TO SAILING INSTRUCTIONS

Any change to the sailing instructions will be posted before 0800 on the day it will take effect, except that any change to the schedule of races will be posted by 1900 on the day before it will take effect.

4 SIGNALS MADE ASHORE

4.1 Signals made ashore will be displayed on the flagpole located at Coral Reef Yacht Club.

4.2 When flag AP is displayed, “1 minute” is replaced with “not less than 60 minutes” in race signal AP. This changes RRS Race Signals.

5 SCHEDULE OF RACES

5.1 A competitor's meeting will begin at 0930 hours on Wednesday, March 28, 2018

5.2 Ten races are scheduled with the warning signal for the first race each day as follows:

Wednesday, March 28, 2018---Warning Signal 1130 hours

Thursday, March 29, 2018---Warning Signal 1030 hours

Friday, March 30, 2018---Warning Signal 1030 hours

5.3 No warning signal will be made after **1400** hours on **Friday**.

6 CLASS FLAG

The class flag will be a white flag with the Lightning class insignia.

7 RACING AREA

7.1 Attachment A shows the location of the racing area on Biscayne Bay

7.2 The direction from the harbor to the racing area is approximately in an easterly to southeasterly direction.

8 THE COURSES

8.1 The diagrams in Attachment B show the courses, including the approximate angles between legs, the order in which marks are to be passed, and the side on which each mark is to be left.

8.2 No later than the warning signal, the race committee signal boat will display the course to be sailed, along with the wind direction and length to the weather mark on a course board.

8.3 At or with the completion of three legs of the course, the course may be shortened.

9 MARKS

9.1 Marks of the course will be orange.

9.2 New marks will be yellow.

9.3 CHANGE OF THE NEXT LEG OF THE COURSE: To change the next leg of the course, the race committee will: a. Lay a new mark (and remove the original mark as soon as practicable) OR b. Move the gate OR c. Move the finishing line. When in a subsequent change a new mark is replaced, it will be replaced by an original mark.

9.4 The finishing mark will be yellow.

10 THE START

10.1 The starting line will be between a staff displaying an orange flag on the race committee signal vessel at the starboard end and a yellow mark, or an orange flag on a race committee vessel at the port end of the line.

10.2 For races following the first race of each day, a series of short sound signals may be made approximately 1 minute before the sequence begins to attract attention.

11 THE FINISH

11.1 The finishing line will be between a staff displaying an orange flag on a race committee vessel and a nearby yellow mark. This instruction does not apply when rule 32.2 is in effect.

11.2 Flag “A” displayed with no sound, while boats are finishing means “No more racing today”.

12 PENALTY SYSTEM

12.1 Per Appendix V1, RRS 44.1 and Lightning Documents Governing Article VIII-9 are changed to say: “A boat may take a One-Turn Penalty when she may have broken a rule of Part 2 or rule 31 while racing. However, when she may have broken a rule of Part 2 while in the zone around a mark other than the starting mark, her penalty shall be a Two Turns Penalty.”

13 TIME LIMITS AND TARGETS

13.1 Target time per race will be 45 – 60 minutes/race.

13.2 The time limit will be 90 minutes for the first boat to sail the course and finish. Boats failing to finish within 15 minutes after the first boat sails the course and finishes will be scored Did Not Finish. This changes rules 35, A 4.1, A5 and 63.1.

13.3 Boats failing to finish within the time labeled “Time Limit Expired” after the first boat sails the course and finishes will be scored Did Not Finish/TLE. This changes rules 35, A 4.1, A5 and 63.1.

14 PROTESTS AND REQUESTS FOR REDRESS

14.1 Boats intending to protest an incident occurring in the racing area shall notify the committee signal vessel after conclusion of the race of her intention to protest, including the sail and/or bow number of the boat(s) being protested. This changes rule 61.1(a).

14.2 Protest forms are available in the lobby of Coral Reef Yacht Club. Protests shall be delivered there within the protest time limit.

14.3 The protest time limit is 60 minutes after the race committee finishing vessel docks and signals with one sound signal. The race committee will post the time of the race committee finishing vessel docking on the Official Notice Board as soon as practical after docking.

14.4 Notices will be posted on the Official Notice Board within approximately 10 minutes after the protest time limit to inform competitors of hearings in which they are parties or named as witnesses.

14.5 Notices of protests by the race committee or protest committee will be posted on the Official Notice Board to inform boats under rule 61.1(b).

14.6 Protests will be heard in approximately the order of receipt as soon as possible.

14.7 On the last scheduled day of racing, a request for redress based on a protest committee decision shall be delivered no later than 30 minutes after the decision was posted. This changes rule 62.2.

15 SCORING

15.1 The Low Point Scoring System of Appendix A of *The Racing Rules of Sailing* will be used.

15.2 Ten (10) races are scheduled. One race is required to be completed to constitute a series.

15.3 A boat’s worst score will be discarded if five or more races have been completed. This modifies rule A2 Appendix A.

15.4 Should conditions make it impossible to complete the scheduled number of races, the regatta will be terminated, and the results based on the races completed and scored.

15.4 TEAM SCORING--Each team participating in the Mentoring Coaching Program will be paired with an experienced Lightning team. The finishes for each boat for each race will be combined. The team with the lowest combined score will win the TEAM SCORING event. The Low Point Scoring System of Appendix A of The Racing Rules of Sailing will be used.

16 SAFETY REGULATIONS

16.1 Prior to the first warning signal each day for the first start, each boat shall sail on starboard tack past the stern of the race committee signal boat, and hail her bow number until acknowledged by the race committee.

16.2 A boat that retires from a race or leaves the course before racing for the day is completed, shall notify the race committee by VHF radio before leaving the course, or when that is impossible, the receptionist in the lobby of Coral Reef Yacht Club immediately after arrival ashore. Failure to do so may result in a penalty of a boat from the day's racing.

16.3 A boat requiring assistance shall signal by waving an extended arm, or communicate on VHF radio on channel 71.

17 REPLACEMENT OF CREW OR EQUIPMENT

Substitution of crew or equipment may be allowed with prior written approval of the race committee in consultation with the class measurer or representative. Crew substitutes must be a member of the International Lightning Class Association. Requests for substitution will be made to the committee at the first reasonable opportunity. Approval will be in writing and posted on the notice board.

18 RADIO COMMUNICATION

Use of VHF radios is permitted for communication from the race committee to competitors on channel 71. The race committee intends to use VHF radio to identify On Course Side boats after starts and otherwise communicate with the fleet on the water. Failure to receive a hail, failure for a hail to be made, the order of hails made, or failure to receive other communications to the fleet shall not be cause for redress.

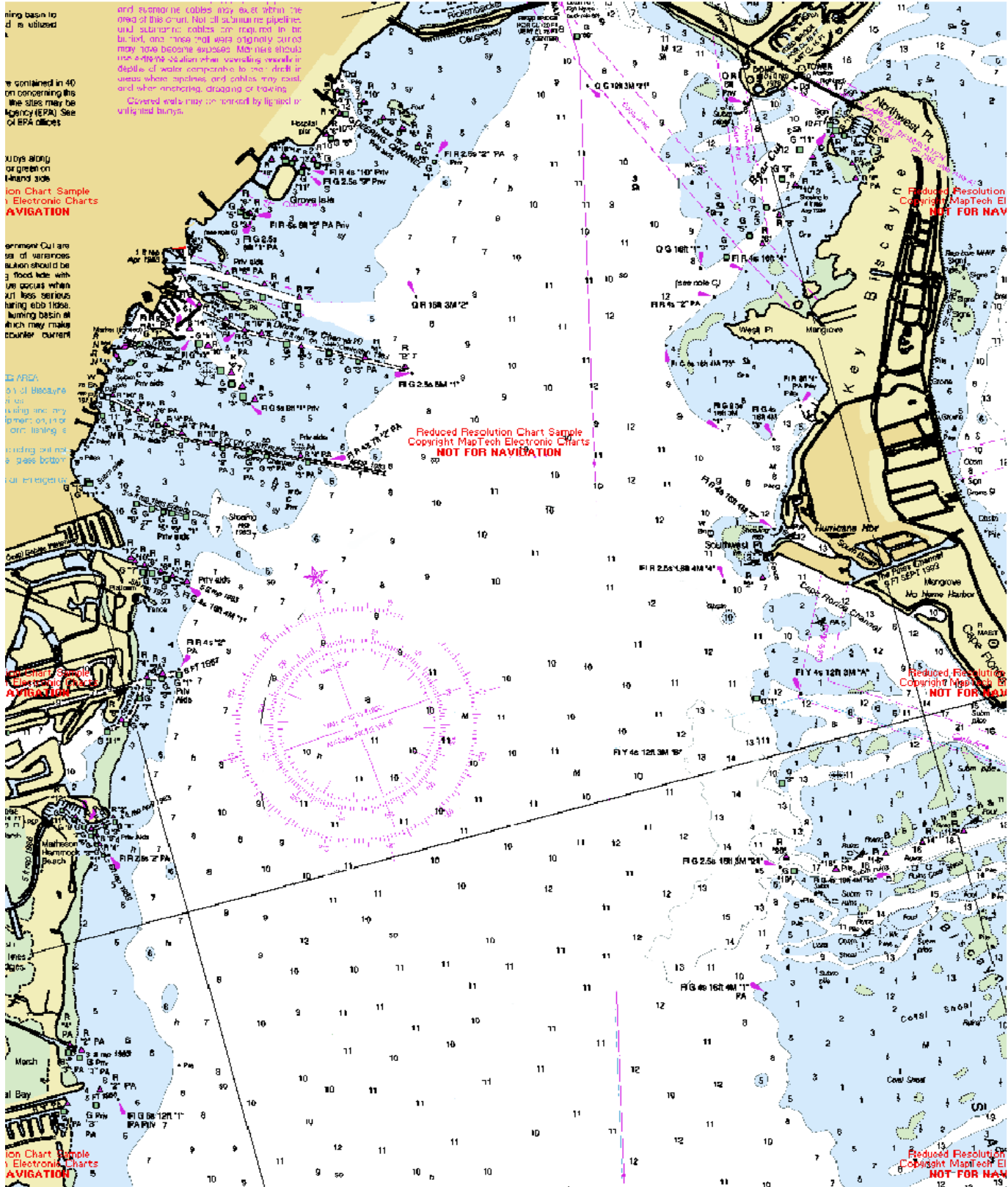
19 PRIZES

Prizes will be given to skipper and crew for first through fifth places.

20 DISCLAIMER OF LIABILITY

Competitors participate in the regatta entirely at their own risk (See RRS 4). As a condition of participation in this regatta, competitors release all claims they may have against Coral Reef Yacht Club and its officers, directors, members, committees and employees for damage to property, personal injury or death sustained in conjunction with or prior to, during or after the regatta. Competitors shall be responsible for damage or injury caused by their breach of *The Racing Rules of Sailing* or applicable government rules for the avoidance of collision.

Attachment A Race Area - Biscayne Bay



2017 Lightning Miami Midwinter Regatta

ATTACHMENT B RACE COURSES

